



rare! From Sanderson Young



54 Long Row
South Quays



Offers Over £550,000

Super Stylish Penthouse Apartment Offering a Delightful Open Plan Lounge/Kitchen and Dining Space, Three Double Bedrooms with Three En-Suites, Three Private Balconies, Secure Off Street Parking and Wonderful Panoramic Views Over The River Tyne!

This superb, modern duplex apartment offers one of the finest in South Tyneside and is ideally placed to the desirable top floor of the prestigious South Quays Development in South Shields.

South Quays, which was re-developed back in 2017, provides some of the largest modern apartments within South Tyneside and provides easy access to South Shields Metro Station and Ferry Terminal offering excellent transport links throughout the region.

The property is placed to provide easy access to beautiful beaches, South Shields town centre with its shops, restaurants and nightlife and indeed The Customs House offering access to excellent cultural events throughout the year. South Shields Ferry Terminal is only a short walk away and offers a short ride over the River Tyne to North Shields and is then only a brief walk into the superb village of Tynemouth with its shops, cafes, restaurants and lovely beaches.

Boasting close to 2,400 Sq ft of living space the internal accommodation comprises: Communal entrance hall with lift and stair access to all floors | Private entrance at the fourth floor | Generous entrance hall with guest WC and stairs leading to the second floor of the apartment | Impressive open plan lounge/kitchen and dining space with private balcony and wonderful views over the river | The kitchen area offers stylish modern cabinetry, integrated appliances and central island with breakfast bar | The living space offers a modern feature fireplace and bi-folding doors that lead to the first of three balconies with glass balustrades.

The main hallway then gives access to the first double bedroom, which is a large double suite with walk-in wardrobe, en-suite bathroom and enjoys its own separate private balcony with views towards the mouth of the River Tyne | Laundry room.

The stairs then give access to the second floor landing, which is generous in size and offers space for a reading and study area and then onto two further double bedrooms | Bedroom two with en-suite shower room and WC, walk-in wardrobe and doors leading to a large private balcony with views | Bedroom three is similar in size to bedroom two and again offers a en-suite shower room with WC, walk-in wardrobe and access to the private balcony.

Externally, the property benefits from secure private allocated parking which is accessed via large electronically operated entrance gates.

Immaculately presented throughout, the property including high quality and high end fittings include bespoke oak staircase, Amtico flooring, high specification doors and light switches, wool carpets, and luxury curtains, adding additional value to the property.

This superb, modern penthouse apartment simply demands an early inspection to fully appreciate the quality of accommodation on offer and viewings are strongly recommended.

Services: Mains electric, gas, water and drainage | Tenure: Leasehold | Council Tax: Band F | Energy Performance Certificate: Rating C

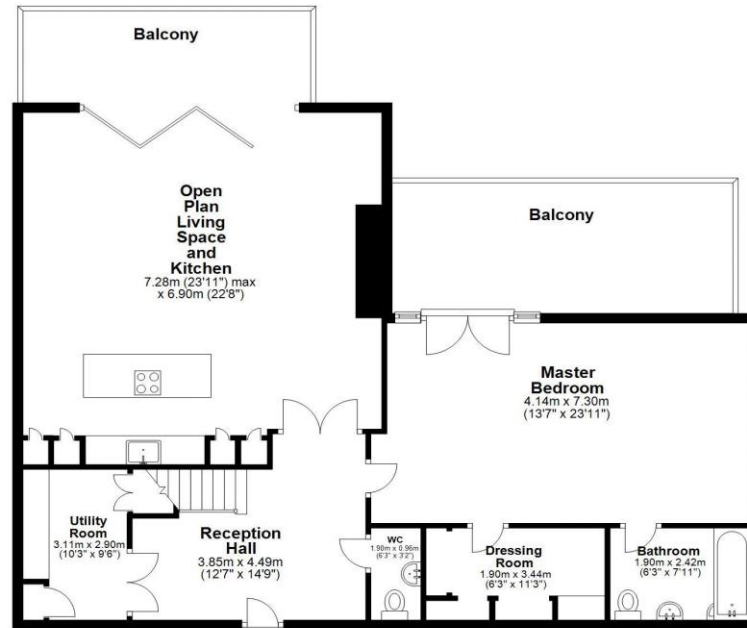






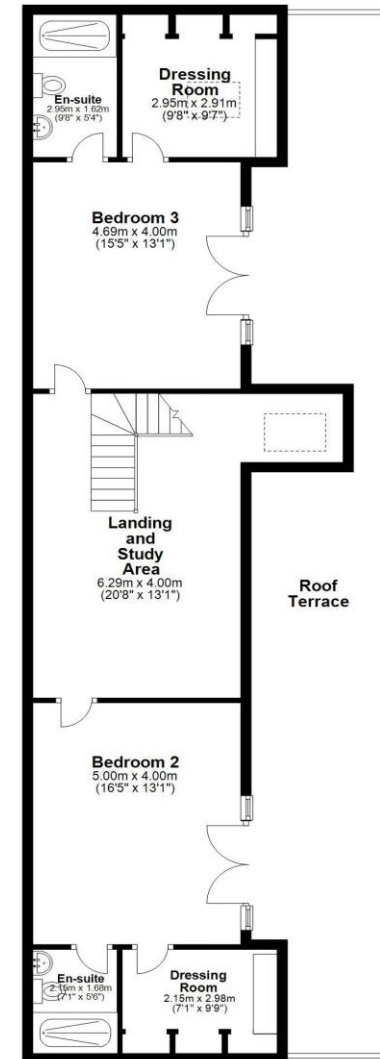
Ground Floor

Approx. 115.9 sq. metres (1247.8 sq. feet)



First Floor

Approx. 92.2 sq. metres (992.4 sq. feet)



Total area: approx. 208.1 sq. metres (2240.3 sq. feet)

54 Long Row, South Quays, South Shields



rare! From Sanderson Young



All confidential enquiries to:
rare! Office, 95 High Street, Gosforth, Newcastle upon Tyne NE3 4AA
E: duncan.young@sandersonyoung.co.uk | E: ashleigh.sundin@sandersonyoung.co.uk
T: 0191 2233500 | www.sandersonyoung.co.uk